

PHILLIP ISLAND CAMERA CLUB INC: AUGUST 2024



Meetings: 1st Monday of the month 1.30 - 4pm (Easter & Cup Day weekend exceptions)

Website: <http://www.phillipislandcameraclub.com.au>

Facebook Page: <https://www.facebook.com/groups/382689165127848>

YouTube: <https://youtube.com/channel/UCCPK8oUGGI0C2xRY2OhFOyg>

Enquiries: Graeme – phillipislandcameraclub@gmail.com

CALENDAR DATES FOR YOUR DIARY

Below is a list of the proposed dates for Camera Club functions so that you can pencil them into your diary. Please check our Facebook page or your emails for any changes due to weather or other unforeseen circumstances.

Date	Function	Date	Function
16 August – 16 September	Gippsland Interclub at Coal Creek. Opening of exhibition will be on 17 th August at 2:00pm, with possibility of a pub meal at Korumburra in the evening.	2 nd September	General Meeting at 1:30pm at Newhaven Yacht Club. Workshop – Using Manual Mode. Please bring your camera. Afternoon tea – BYO cup and gold coin donation. Raffle tickets \$2 each or 3 for \$5. Lunch prior to meeting is at the Vietnam Vets Museum Café at 12noon. RSVP to Lorraine by text 041 933 1630 or email tranlorraine@gmail.com by Friday 30 th August.
22nd August	Social lunch at Woolli Tavern at 12:30pm. (Note change of venue due to renovations at RSL.) Partners are welcome to attend. Please RSVP to Graeme 0407 092 352.	9 th September	Excursion to Cape Liptrap . Please RSVP to James 0439 459 206. Car pool at Newhaven Yacht Club car park at 8am.
1 st September	Images for the September Monthly Challenge , 'Balanced' are due to Gary parnellg@yahoo.com by 5pm. Open images for the October evaluation are also due to Gary by 5pm.	22 nd September	Guided walk with John Eddy (Friends of Scenic Estate Conservation Reserve) around the reserve (opposite Forrest Caves) from 10am – 12pm.

2024 SYLLABUS

The 2024 syllabus for PICC is shown below. The intent behind the syllabus is to provide a varied choice of topics that will, hopefully, encourage members to expand their photography skills. We have, within PICC, an incredible range of photographic skill sets that we would like to draw on and share. With that in mind, members are encouraged to participate in our challenges and share their personal photographic passions. Above all, though, enjoy your photography.

Meeting	Topic for Evaluation or workshop	Monthly challenge	5 mins of fame	Challenge brief
2 nd September	Workshop – Manual Mode	Balanced	Volunteers needed!	Manual Mode
7 th October	Open evaluation	Manual Mode		Patterns
11 th November	Workshop - TBA	Patterns		PICC 2024
2 nd December	Portfolio	PICC 2024		

[WELCOME TO OUR NEW MEMBERS](#)

A big Phillip Island Camera Club Welcome to our new members, Kim Poole, Roy Van Amersfoorth and Robert Burns. Thank you for joining our club. We hope you enjoy the meetings, excursions and social events held by the club, whilst you learn more about photography to further advance your skills. Please let us know if there are particular skills you wish to learn. There is a great deal of expertise within the club and always someone willing to assist.

[AUGUST CHALLENGE: BALANCE/BALANCED PHOTOGRAPHY](#)

Our challenge for the September meeting is **'Balance'**. This can seem like a vague concept but it isn't as complex as it seems. Let's start with an accepted definition.

Definition

Balance is a composition technique that arranges elements within the frame to achieve equal visual weight across the image.

Visual weight is how much attraction an element draws from the viewer and depends on factors such as size, colour, and contrast.

The aim of balance within an image is to give your photos a sense of harmony and stability.

Different types of photographic balance are...

- 1.Symmetrical Balance - Two sides of the image are identical and create a mirror effect
- 2.Asymmetrical Balance -The arrangement of different elements creates a balanced composition. These elements can be physically different.
- 3.Radial Balance: Image elements radiate from a central point, creating circular balance.
- 4.Colour Balance: Colours are used to balance the visual weight within the image.
- 5.Tonality Balance – The balance of light and dark areas within an image.

We have all looked at an image and thought either it works really well or, alternatively, it misses the mark somehow, without being able to pinpoint why. Often this will boil down to the balance and composition of the image. Balance and composition are related in that balance relies on the arrangement of the various elements in a photo to create a pleasing image.

For our challenge, don't overthink things too much. A good place to start is to look at an image with the rule of thirds in mind. Look at the distribution of the image elements within that grid. You will more than likely know when it is right.

To help you along, there are some links below. Have a look at these references; they have some great tips and tricks.

[9 Ways to Create Balance in Your Photography Compositions \(digital-photography-school.com\)](https://www.digital-photography-school.com/9-ways-to-create-balance-in-your-photography-compositions)

[Principles of Art: Using BALANCE in Photography \(youtube.com\)](https://www.youtube.com/watch?v=...)

[How to Get Balance in Your Photography - Bringing It all Together Episode 9 \(youtube.com\)](https://www.youtube.com/watch?v=...)

[How to Achieve Compositional Balance in Photography | PetaPixel](https://www.petapixel.com/2013/05/07/how-to-achieve-compositional-balance-in-photography/)

Please send your challenge images to Gary Parnell at parnellg@yahoo.com by 1st September

Remember, we are not looking for perfection, just have a go and have fun. We want to see your images.

AUGUST CHALLENGE: SUNRISE/SUNSET IMAGES

Thanks to all who submitted images for the August Monthly Challenge 'Sunrises/Sunsets'. Below is a selection of some of the images that were submitted. Please go to <https://www.youtube.com/watch?v=dZXmdz7tWLO> to view all the Sunrise/Sunset images along with the images taken at the excursion to Conservation Hill. Thanks Gary.



EVALUATION OF ANIMAL PORTRAIT IMAGES

Thanks to judge Lin Richards who evaluated the Animal Portrait images at our August meeting. Well done to all who submitted images for evaluation. There were 38 entries of which 13 gained Highly Commended and 10 gained Commended.

AWARD	TITLE	PHOTOGRAPHER
Highly commended	Alpaca	Rhonda Buitenhuis
Highly commended	Breakfast argument	Ken Anderson
Highly commended	Goat	Graeme Lawry
Highly commended	Pepper	Ian Prain
Highly commended	PRINT – Australian Pelican	Will Hurst
Highly commended	PRINT – Got my eye on you	Will Hurst
Highly commended	PRINT - Sienna	James Millward
Highly commended	Missy 2	Ian Prain
Highly commended	Rusty	Phillip Johnstone
Highly commended	Seal	Graeme Lawry
Highly commended	The New Kitten	Rhonda Buitenhuis
Highly commended	Watching	Colleen Johnston
Highly commended	You got a problem?	Lorraine Tran
Commended	A New Toy	Colleen Johnston
Commended	Aging Gracefully	Andrew Keir

Commended	Goose	Jenny Skewes
Commended	Hide and Seek	Rhonda Buitenhuis
Commended	Juno on the couch	Jenny Skewes
Commended	Lily	Phillip Johnstone
Commended	Louie Lacy	Alan Lacey
Commended	Missy 1	Ian Prain
Commended	Smile	Andrew Keir
Commended	Snake	Graeme Lawry

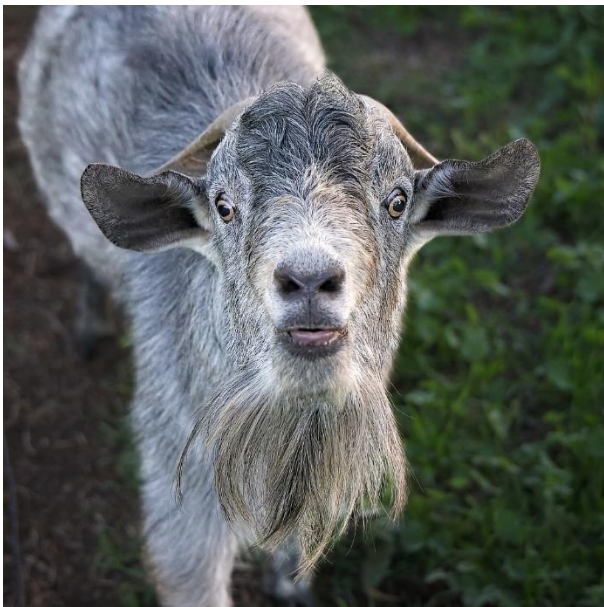
A selection of Highly Commended and Commended images appears below. Thanks to Gary, the Animal Portrait images can be viewed at our YouTube Channel at <https://www.youtube.com/watch?v=58dZEFqxx7U>



Highly commended: Alpaca
Rhonda Buitenhuis



Highly commended: Rusty
Phillip Johnstone



Highly commended: Goat
Graeme Lawry



Highly commended: PRINT – Australian Pelican
Will Hurst



Highly commended: Sienna
James Millward



Highly commended: Missy 2
Ian Prain



Highly commended: Breakfast Argument
Ken Anderson



Highly commended: You got a problem?
Lorraine Tran



Highly commended: Watching
Colleen Johnston



Commended: Juno on the couch
Jenny Skewes



Commended: Louie Lacey 3
Alan Lacey



Commended: Smile
Andrew Keir

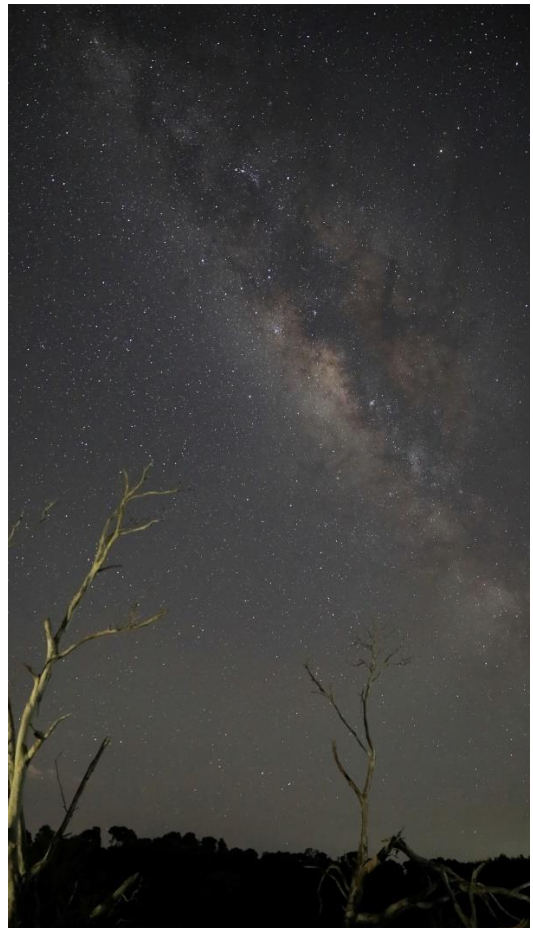
EXCURSIONS, CONFERENCES, EXHIBITIONS AND WORKSHOPS

- **Gippsland Interclub** to be hosted by South Gippsland Club and held at **Coal Creek Korumburra** (opening on 17th August at 2pm) and followed by dinner at a local pub afterwards. The exhibition will run until 16th September.
- The PICC **Cape Liptrap Excursion** that was to be held earlier in the year has been rescheduled to 9th September (weather permitting). Please note that some of the road into Cape Liptrap is unsealed. Car-pooling at Newhaven Yacht Squadron Car Park at 8am.
- **Bickleigh Vale Village Mooroolbark Excursion**, (to photograph cottage gardens designed by Edna Walling) – Open Gardens Victoria Sunday 13th October (admission cost payable); please book for the 11am timeslot if you wish to attend with the club [Open Gardens Victoria - Bickleigh Vale Village Tickets, Bickleigh Vale Village, Mooroolbark | TryBooking Australia](#)
- Excursion to Jenny's **Wywurri flower farm** (between Wonthaggi and Inverloch) on 17th October (date to be confirmed) from 10am. Bring a picnic lunch if you wish to stay a little longer.
- **State Coal Mine** (optional underground coal mine tour for a cost of around \$20 at 11:30am). Above ground is free and includes historic buildings and displays from Wonthaggi's Coal Mining history. Optional add-on is Harmers Haven just out of Wonthaggi. Date to be decided.
- PICC **Great Ocean Road Excursion** – staying in shared cabins/caravan sites at Apollo Bay possibly 18th – 22nd November; Rob is seeking expressions of interest and a deposit will be required soon.
- The 20th **Pakenham National Photographic Exhibition 2024** will be held at the Cardinia Cultural Centre, Lakeside Boulevard, Pakenham, Pakenham from Friday 4th October to Sunday 3rd November, 10am to 3pm Tuesday to Sunday (closed Mondays). Entries close on 14th September 2024. Please go to www.pakenhamnational.org

[EXCURSION TO CONSERVATION HILL FOR ASTRO PHOTOGRAPHY](#)

Thanks to Graeme who organised the excursion to Conservation Hill for Astro Photography on 2nd July (not on 1st July due to cloud cover). A few of the images are below and more can be viewed on our YouTube Channel

<https://www.youtube.com/watch?v=dZXmdz7tWLO>



MEMBERSHIP RENEWALS

Thanks to all who have completed the revised membership form (valid for July 2024 – 30 June 2025) to ensure we have all your correct and up-to-date information including an emergency contact, permission for the club to use your photos, image and name (with an opt out clause). These details are being securely recorded for reference if required.

For those who have not yet filled in the revised membership form please email Treasurer James Millward

james.millward@hotmail.com

The 2024-25 financial year Membership is \$40 per annum (a \$5 increase) as agreed at the 2023 PICC AGM. Payment details are provided on the membership form.

VAPS NEWSBRIEF

The Victorian Association of Photographic Societies (VAPS) August Newsbrief is available at

<https://mailchi.mp/2a543f6fc01c/vq5hq99cbx-8340538?e=e3f4628796>

WHAT YOU NEED TO KNOW ABOUT SUBMITTING IMAGES FOR EVALUATION

DIGITAL IMAGES (EDI):

- Images may either be created with a digital camera (including a mobile phone camera) or created with a conventional camera and scanned into electronic format.
- Images may be enhanced or manipulated using image editing software, but the original image must have been made by the entrant.
- As per VAPS specifications (www.vaps.org.au), maximum horizontal dimension is 1920 pixels and the maximum vertical dimension is 1080 pixels.
- Each image file must be in sRGB JPEG format and a maximum of up to 5 Mb in size (5000kb).

Name your data image with Title of photo and your Club member number, separated by an underscore, followed by the topic and month when the judge will present the images to the members at the monthly meeting eg: **Sunset on Woolamai Beach_126_Open_Feb2022**.

Maximum of **three** entries in total either in PRINTS, EDPI or a combination of the two.

NOVICE CATEGORY REINSTATED:

To encourage new members to participate in the monthly evaluation, it has been decided to re-instate a NOVICE section. This will be in the EDPI (Electronic Digital Projected Image format. We would like to emphasise that this is not a competition but a learning opportunity. If you need assistance to get started please speak to one of the Committee Members, who are only too happy to help. Maximum of three entries.

Label your entries NOV_(Title of image)_(PICC membership number)_Topic_Month2020

ARE WE HAVING PRINTS?

Prints may be submitted for the evaluation topics in 2024. A total of **three** images only can be entered into the evaluation. **Three** prints or **three** EDPIs or a combination prints/EDPIs totalling **three** can be submitted. The

exception to this is the Portfolio topic, where a combination of four prints or four EDPIs or a combination of prints/EDPIs can be submitted.

When entering prints, we ask that an EDPI of the print be entered also as our plan is to have the prints displayed but to show them in the slide-show so that everyone can see the detail on screen. It is important that print EDPIs be labelled with PRINT e.g. **PRINT_Title of image_Membership No_Open 202_Feb2022**

Please bring the actual print of the image along to the Newhaven Yacht Club Clubroom on the day of the meeting for it to be displayed for the judge's final perusal and for members to view.

PRINTS

- Prints may be ANY size, up to a maximum of 40cm x 50cm (16in x 20in) when mounted.
- ALL prints MUST be mounted.
- Panoramic print formats are acceptable, but must fit on a 40cm x 50cm (16in x 20in) board.
- Prints mounted to a total thickness greater than 5mm will not be accepted.
- Please also include a digital image of the photo you send in labelled as for the EDPI, but starting with **PRINT: e.g. PRINT_Sunset on Woolamai Beach_126_Open_July2018**

Please note: If an image does not receive Highly Commended, it can be submitted into only one more club evaluation. This allows the maker to adjust the image following the judge's recommendations.

NEWSLETTER ITEMS

If you wish to contribute to the monthly newsletter, please send items to Lorraine Tran at tranlorraine@gmail.com

Please help make this newsletter informative for everyone.

The Taker of the Photo

I am the taker of the photos. I am the receiver of the groans, the eye-rolls and 'hurry-ups'. I am the one who disrupts the moments to *capture* them. And sometimes it's hard to be that person. But I am also the holder of the memories...I am the one who keeps the precious proof. I am the bearer of the stories, the maker of the photo books that bring tears, laughter and love rushing into the room, each time they are opened. The eye-rolls will be replaced one day with absolute all-consuming gratitude, for the image of a smiling face so missed and a memory returned home to stay. Keep disrupting life to capture it, my friends, when it's all that is left; someone somewhere will be so very glad you did.

Published with permission of Donna Ashworth from *Growing Brave* released on September 1st.

**Phillip Island Monthly Club Evaluation - Judge Feedback for – Aug 2024- Subject –Animal Portrait-
Judge – Lin Richards**

*Please refer to Judge Instruction Letter for ratings: **HC** (Highly Commended) - **C** (Commended) 25%=10 awards*

Sequence by Title	Member No	Title	Judge Rating	EDPI
1	361	A New Toy	C	A lovely moment well captured.
2	889	Aging Gracefully	C	Lovely shot but distracting background at top needs cropped off.
3	431	Alpaca	H/C	Lovely simple portrait – sharp, well exposed & lit with great background.
4	871	Louie Lacey 1		Although well exposed and lit, it is framed too tightly.
5	866	Breakfast Argument	H/C	A great moment well captured.
6	866	Bumblebee		Sorry, but this an insect – not an animal.
7	399	Cornelius Rabbit		Well exposed and sharp, but needs a ¾ angle of view.
8	875	Goat	H/C	Well framed, sharp where needed and background works well.
9	399	Goose	C	A good close-up – like the catchlight in its eye.
10	431	Hide and Seek	C	A thoroughly cute moment well caught.
11	361	I'm Listening		Needs cropped @ RHS, otherwise well done.
12	399	Juno on The Couch	C	A good ¾ angle of view.
13	887	Kookaburra Ventnor		Well framed and lit but is over exposed and is unsharp.
14	866	Larry		Needs crop @ LHS but well-lit and exposed.
15	870	Lazy Days		Good composition and lighting but needed to be sharper.

**Phillip Island Monthly Club Evaluation - Judge Feedback for – Aug 2024- Subject –Animal Portrait-
Judge – Lin Richards**

*Please refer to Judge Instruction Letter for ratings: **HC** (Highly Commended) - **C** (Commended)*

Sequence by Title	Member No	Title	Judge Rating	
16	885	Lily	C	A good portrait but needs cropped at the top.
17	889	BACK OFF BUSTER		Needs a lot of cropping to remove distracting surrounds – well done otherwise.
18	871	Louie Lacey 3	C	Well framed and lighting has worked well.
19	855	Missy 1	C	Well done to have black dog stand out so well.
20	855	Ollie 1		Good lighting and modelling but is too tight @ LHS.
21	885	Pepper	H/C	A great composition and beautifully done with superb lighting.
22	447	PRINT_Australian Pelican	H/C	A nice simple portrait – beautifully sharp.
23	447	PRINT_Got My Eye on You	H/C	Beautifully sharp, well composed with good lighting.
24	884	PRINT_It's All About the Eyes		A well done image but find the pipe in the background quite distracting.
25	884	PRINT_Little Penguin		Well seen & captured but foreground very distracting.
26	884	PRINT_Sienna	H/C	A really lovely portrait – beautiful modelling, good lighting and exposure.
27	855	Missy 2	H/C	This is well done, as the dog stands out very well against dark background.
28	870	Road Kill		Well seen and framed but just not sharp enough.
29	885	Rusty	H/C	I love this – the reflection is great and it is beautifully sharp & well exposed.
30	875	Seal	H/C	I love the composition of this – beautifully sharp and well exposed.

**Phillip Island Monthly Club Evaluation - Judge Feedback for – Aug 2024- Subject –Animal Portrait-
Judge – Lin Richards**

*Please refer to Judge Instruction Letter for ratings: **HC** (Highly Commended) - **C** (Commended)*

Sequence by Title	Member No	Title	Judge Rating	EDPI
31	889	Smile	C	A great moment well captured.
32	871	Louie Lacey 2		Too tight in the frame & not sharp, but excellent lighting.
33	875	Snake	C	Well seen and sharp, but needs cropped at the top.
34	431	The New Kitten	H/C	A lovely close-up – sharp where needed and very well lit.
35	870	Tired		Sorry – this is a stuffed toy – not a real live animal.
36	361	Watching	H/C	A lovely photo of puss – well framed and lit.
37	887	Willy Wagtail		Too much space @ top & RHS – exposure good but not sharp.
38	653	You Got a Problem?	H/C	Good framing, tight but works well – great lighting, sharpness & exposure.